



CARMEL VIDYA BHAVAN TRUST'S
CHRIST COLLEGE - PUNE

(Affiliated to the Savitribai Phule Pune University)

ID-No. PU/PN/ASC/269/2007, College Code-829

26/4A, Sainikwadi, Vadgaon Sheri, Pune 411 014.

Accredited by NAAC with 'B+' Grade

CRITERION – II	
KEY INDICATOR	2.6 Pass percentage of students during the last five years
METRIC NO	2.6.3

***CERTIFIED REPORT FROM HEAD OF INSTITUTION
/CONTROLLER OF EXAMINATION OF THE AFFILIATING
UNIVERSITY INDICATING PASS PERCENTAGE OF
STUDENTS OF THE FINAL YEAR ELIGIBLE FOR THE
DEGREE PROGRAM – WISE/ YEAR – WISE***

2019 -2020



CARMEL VIDYA BHAVAN TRUST'S
CHRIST COLLEGE - PUNE

(Affiliated to the Savitribai Phule Pune University)

ID-No. PU/PN/ASC/269/2007. College Code-829

26/4A, Sainikwadi, Vadgaon Sheri. Pune 411 014.

Accredited by NAAC with 'B+' Grade

Ref. No. CCP/

CRITERIA II	
Key Indicator	2.6 Student performance and Learning Outcomes
Metric No.	2.6.3

➤ Pass percentage of Students during last five years (excluding backlog students)

RESULT ANALYSIS 2019-20

Program Code	Program Name	Number of students appeared in the final year examination	Number of students passed in final year examination	Pass percentage
11819	TYBA	44	34	77.27
120193	TY BCOM	110	108	98.18
10119	TY BBA	69	69	100.00
10319	TY BBA(IB)	71	67	94.37
10219	TY BBA-CA	60	58	96.67
11019	TY BSC-CS	51	50	98.04
25019	SY M.COM	50	49	98.00
21619	SY MSC	19	18	94.74
Total		474	453	95.57

Average Pass Percentage = 95.57%

J. Johnson

College Examination Officer (CEO)

College Examination Officer
Christ College
Pune- 411 014



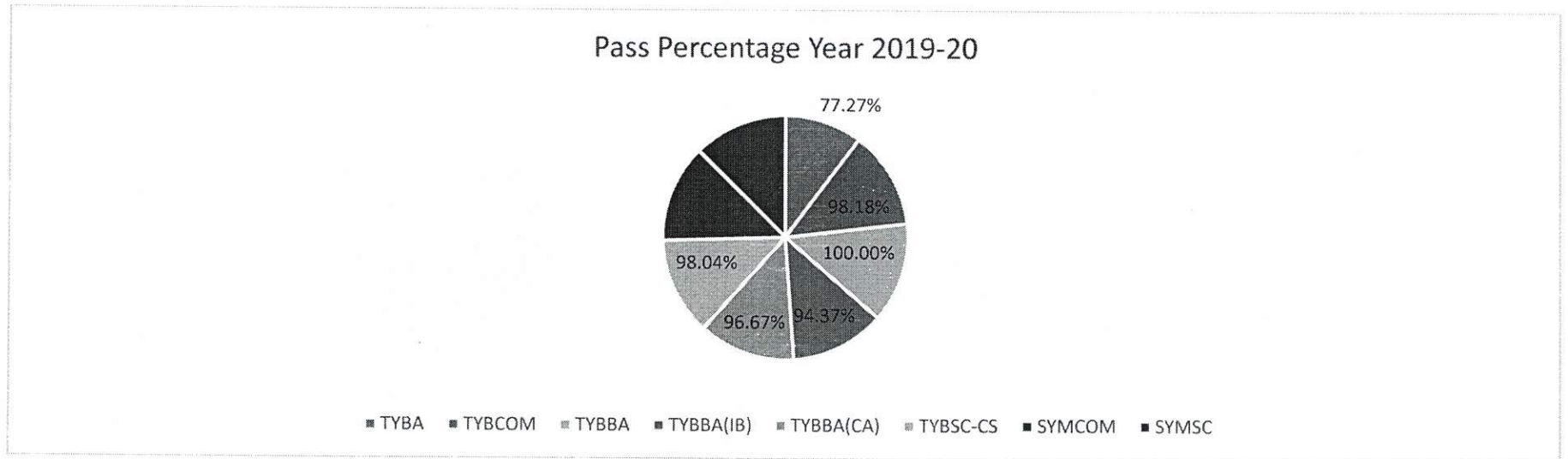
Amantoni

Principal

Principal / Director
Carmel Vidya Bhavan Trust's
Christ College
Pune- 411014.

CHRIST COLLEGE - PUNE
RESULT ANALYSIS 2019-2020
ANNUAL RESULT

Program Name	TYBA	TYBCOM	TYBBA	TYBBA(IB)	TYBBA(CA)	TYBSC-CS	SYMCOM	SYMSC	Total
Number of students Appeared	44	110	69	71	60	51	50	19	474
Number of students Passed	34	108	69	67	58	50	49	18	453
Pass Percentage	77.27%	98.18%	100.00%	94.37%	96.67%	98.04%	98.00%	94.74%	95.57%



J. Johnson

Dr. Jiji Johnson
 College Examination Officer

College Examination Officer
 Christ College
 Pune- 411 014.

Principal
 Principal / Director
 Carmel Vidya Bhavan Trust's
 Christ College
 Pune- 411014

CHRIST COLLEGE - PUNE

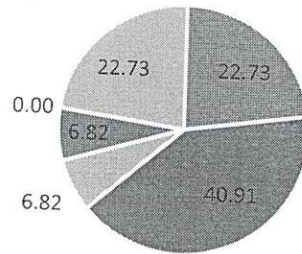
T.Y. B.A. RESULT ANALYSIS

2019-2020

ANNUAL RESULT

FIRST CLASS WITH DISTINCTION [70% AND ABOVE]	FIRST CLASS [60% & above]	HIGHER SECOND CLASS [55% & above]	SECOND CLASS [50% & above]	PASS [40% & above]	FAIL [Below 40%]	TOTAL
10	18	3	3	0	10	44
22.73	40.91	6.82	6.82	0.00	22.73	100.00

T.Y. B.A. RESULT



■ FIRST CLASS WITH DISTINCTION ■ FIRST CLASS ■ HIGHER SECOND CLASS ■ SECOND CLASS ■ PASS ■ FAIL

J. Johnson

Dr. Jiji Johnson
College Examination Officer

College Examination Officer
Christ College
Pune- 411 014.

[Signature]
Principal / Director
Carmel Vidya Bhavan Trust's
Christ College
Pune- 411014

CHRIST COLLEGE - PUNE

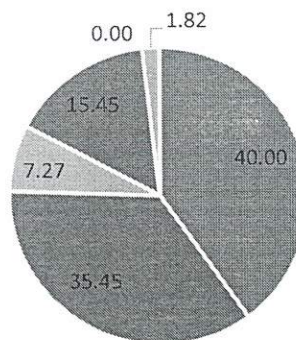
T.Y. B.COM. RESULT ANALYSIS

2019-2020

ANNUAL RESULT

FIRST CLASS WITH DISTINCTION [70% AND ABOVE]	FIRST CLASS [60% & above]	HIGHER SECOND CLASS [55% & above]	SECOND CLASS [50% & above]	PASS [40% & above]	FAIL [Below 40%]	TOTAL
44	39	8	17	0	2	110
40.00	35.45	7.27	15.45	0.00	1.82	100.00

T.Y.B.COM. RESULT



■ FIRST CLASS WITH DISTINCTION ■ FIRST CLASS ■ HIGHER SECOND CLASS ■ SECOND CLASS ■ PASS ■ FAIL

J. Johnson

Dr. Jiji Johnson
College Examination Officer
Christ College
Pune- 411 014.

[Signature]
Principal / Director
Carmel Vidya Bhavan Trust's
Christ College
Pune- 411014

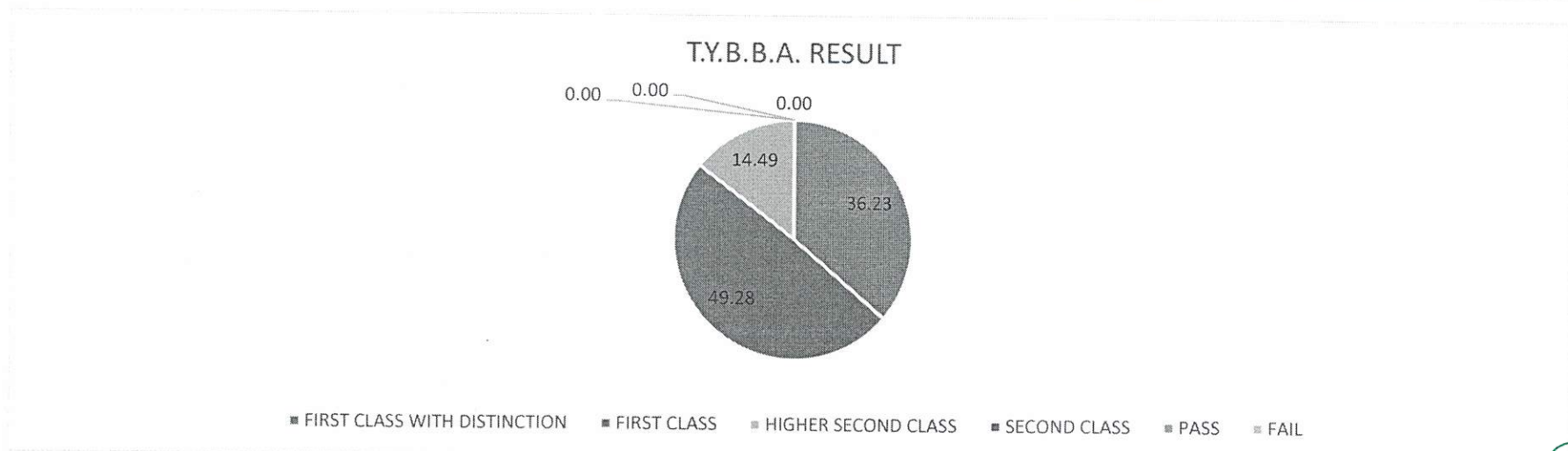
CHRIST COLLEGE - PUNE

T.Y. B.B.A. RESULT ANALYSIS

2019-2020

ANNUAL RESULT

FIRST CLASS WITH DISTINCTION [70% AND ABOVE]	FIRST CLASS [60% & above]	HIGHER SECOND CLASS [55% & above]	SECOND CLASS [50% & above]	PASS [40% & above]	FAIL [Below 40%]	TOTAL
25	34	10	0	0	0	69
36.23	49.28	14.49	0.00	0.00	0.00	100.00



J. Johnson
Dr. Jiji Johnson
College Examination Officer
College Examination Officer
Christ College
Pune- 411 014.

[Signature]
Principal / Director
Carmel Vidya Bhavan Trust's
Christ College
Pune- 411014

CHRIST COLLEGE - PUNE

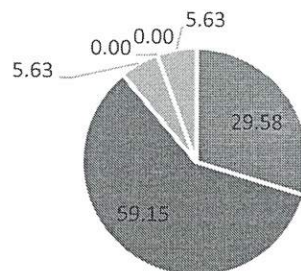
T.Y. B.B.A.(I.B.) RESULT

ANALYSIS 2019-2020

ANNUAL RESULT

FIRST CLASS WITH DISTINCTION [70% AND ABOVE]	FIRST CLASS [60% & above]	HIGHER SECOND CLASS [55% & above]	SECOND CLASS [50% & above]	PASS [40% & above]	FAIL [Below 40%]	TOTAL
21	42	4	0	0	4	71
29.58	59.15	5.63	0.00	0.00	5.63	100.00

T.Y.B.B.A.(I.B.) RESULT



■ FIRST CLASS WITH DISTINCTION ■ FIRST CLASS ■ HIGHER SECOND CLASS ■ SECOND CLASS ■ PASS ■ FAIL

J Johnson

Dr. Jiji Johnson

College Examination Officer

College Examination Officer

Christ College

Pune- 411 014.

[Signature]

Principal / Director
Carmel Vidya Bhavan Trust's
Christ College
Pune- 411014

CHRIST COLLEGE - PUNE

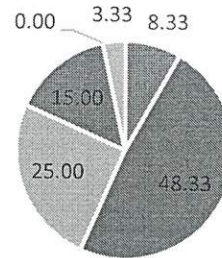
T.Y. B.B.A.(C.A.) RESULT ANALYSIS

2019-2020

ANNUAL RESULT

FIRST CLASS WITH DISTINCTION [70% AND ABOVE]	FIRST CLASS [60% & above]	HIGHER SECOND CLASS [55% & above]	SECOND CLASS [50% & above]	PASS [40% & above]	FAIL [Below 40%]	TOTAL
5	29	15	9	0	2	60
8.33	48.33	25.00	15.00	0.00	3.33	100.00

T.Y.B.B.A.(C.A.) RESULT



■ FIRST CLASS WITH DISTINCTION ■ FIRST CLASS ■ HIGHER SECOND CLASS ■ SECOND CLASS ■ PASS ■ FAIL

J. Johnson

Dr. Jiji Johnson
College Examination Officer
College Examination Officer
Christ College
Pune- 411 014.

[Signature]
Principal / Director
Carmel Vidya Bhavan Trust's
Christ College
Pune- 411014

CHRIST COLLEGE - PUNE

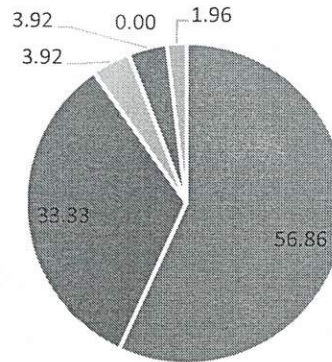
T.Y. B.Sc.(C.S.) RESULT ANALYSIS

2019-2020

ANNUAL RESULT

FIRST CLASS WITH DISTINCTION [70% AND ABOVE]	FIRST CLASS [60% & above]	HIGHER SECOND CLASS [55% & above]	SECOND CLASS [50% & above]	PASS [40% & above]	FAIL [Below 40%]	TOTAL
29	17	2	2	0	1	51
56.86	33.33	3.92	3.92	0.00	1.96	100.00

T.Y.B.Sc.(CS) RESULT



■ FIRST CLASS WITH DISTINCTION ■ FIRST CLASS ■ HIGHER SECOND CLASS ■ SECOND CLASS ■ PASS ■ FAIL

J. Johnson

Dr. Jiji Johnson
College Examination Officer
Christ College
Pune- 411 014.

Principal / Director
Carmel Vidya Bhavan Trust's
Christ College
Pune- 411014

CHRIST COLLEGE - PUNE

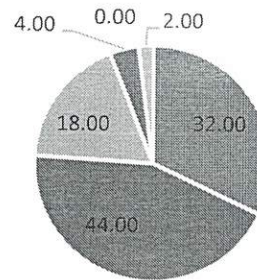
S.Y.M.Com. RESULT ANALYSIS

2019-2020

ANNUAL RESULT

FIRST CLASS WITH DISTINCTION [70% AND ABOVE]	FIRST CLASS [60% & above]	HIGHER SECOND CLASS [55% & above]	SECOND CLASS [50% & above]	PASS [40% & above]	FAIL [Below 40%]	TOTAL
16	22	9	2	0	1	50
32.00	44.00	18.00	4.00	0.00	2.00	100.00

S.Y.MCOM. RESULT



■ FIRST CLASS WITH DISTINCTION ■ FIRST CLASS ■ HIGHER SECOND CLASS ■ SECOND CLASS ■ PASS ■ FAIL

J. Johnson

Dr. Jiji Johnson
College Examination Officer
College Examination Officer
Christ College
Pune- 411 014.

[Signature]
Principal / Director
Carmel Vidya Bhavan Trust's
Christ College
Pune- 411014.

CHRIST COLLEGE - PUNE

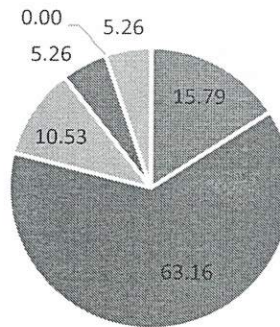
S.Y.M.Sc.(CS) RESULT ANALYSIS

2019-2020

ANNUAL RESULT

FIRST CLASS WITH DISTINCTION [70% AND ABOVE]	FIRST CLASS [60% & above]	HIGHER SECOND CLASS [55% & above]	SECOND CLASS [50% & above]	PASS [40% & above]	FAIL [Below 40%]	TOTAL
3	12	2	1	0	1	19
15.79	63.16	10.53	5.26	0.00	5.26	100.00

S.Y. M.Sc. RESULT



■ FIRST CLASS WITH DISTINCTION ■ FIRST CLASS ■ HIGHER SECOND CLASS ■ SECOND CLASS ■ PASS ■ FAIL

J. Johnson
Dr. Jiji Johnson
College Examination Officer
College Examination Officer
Christ College
Pune- 411 014.

[Signature]
Principal / Director
Carmel Vidya Bhavan Trust's
Christ College
Pune- 411014