



CARMEL VIDYA BHAVAN TRUST'S
CHRIST COLLEGE - PUNE

(Affiliated to the Savitribai Phule Pune University)

ID-No. PU/PN/ASC/269/2007, College Code-829

26/4A, Sainikwadi, Vadgaon Sheri, Pune 411 014.

Accredited by NAAC with 'B+' Grade

CRITERION – II	
KEY INDICATOR	2.6 Pass percentage of students during the last five years
METRIC NO	2.6.3

***CERTIFIED REPORT FROM HEAD OF INSTITUTION
/CONTROLLER OF EXAMINATION OF THE AFFILIATING
UNIVERSITY INDICATING PASS PERCENTAGE OF
STUDENTS OF THE FINAL YEAR ELIGIBLE FOR THE
DEGREE PROGRAM – WISE/ YEAR – WISE***

2018 -2019



CARMEL VIDYA BHAVAN TRUST'S
CHRIST COLLEGE - PUNE

(Affiliated to the Savitribai Phule Pune University)

ID-No. PU/PN/ASC/269/2007, College Code-829
26/4A, Sainikwadi, Vadgaon Sheri, Pune 411 014.
Accredited by NAAC with 'B+' Grade

Ref. No. CCP/

CRITERIA II	
Key Indicator	2.6 Student performance and Learning Outcomes
Metric No.	2.6.3

➤ Pass percentage of Students during last five years (excluding backlog students)

RESULT ANALYSIS 2018-19

Program Code	Program Name	Number of students appeared in the final year examination	Number of students passed in final year examination	Pass percentage
11819	TYBA	34	25	73.53
120193	TY BCOM	108	82	75.93
10119	TY BBA	55	46	83.64
10319	TY BBA(IB)	60	49	81.67
10219	TY BBA-CA	57	43	75.44
11019	TY BSC-CS	48	27	56.25
25019	SY M.COM	36	33	91.67
21619	SY MSC	24	21	87.50
Total		422	326	77.25

Average Pass Percentage = 77.25%

J. Johnson

College Examination Officer (CEO)

College Examination Officer
Christ College
Pune- 411 014.



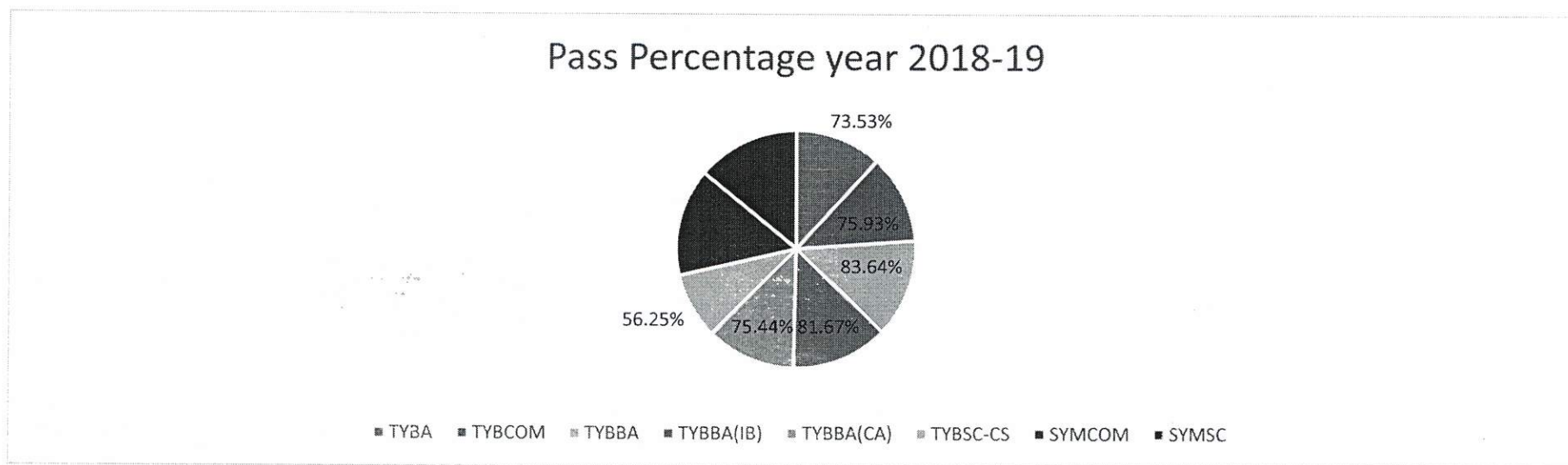
Ammanstoni

Principal

Principal / Director
Carmel Vidya Bhavan Trust's
Christ College
Pune- 411014.

CHRIST COLLEGE - PUNE
RESULT ANALYSIS 2018-2019
ANNUAL RESULT

Program Name	TYBA	TYBCOM	TYBBA	TYBBA(IB)	TYBBA(CA)	TYBSC-CS	SYMCOM	SYMSC	Total
Number of students Appeared	34	108	55	60	57	48	36	24	422
Number of students	25	82	46	49	43	27	33	21	326
Pass Percentage	73.53%	75.93%	83.64%	81.67%	75.44%	56.25%	91.67%	87.50%	77.25%



J. Johnson

Dr. Jiji Johnson
 College Examination Officer
 College Examination Officer
 Christ College
 Pune- 411 014.

[Signature]

Principal
 Principal / Director
 Carmel Vidya Bhavan Trust's
 Christ College
 Pune- 411014

CHRIST COLLEGE - PUNE

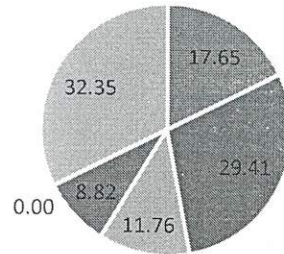
T.Y. B.A. RESULT ANALYSIS

2018-2019

ANNUAL RESULT

FIRST CLASS WITH DISTINCTION [70% & above]	FIRST CLASS [60% & above]	HIGHER SECOND CLASS [55% & above]	SECOND CLASS [50% & above]	PASS [40% & above]	FAIL [Below 40%]	TOTAL
6	10	4	3	0	11	34
17.65%	29.41%	11.76%	8.82%	0.00%	32.35%	100.00%

T.Y.B.A. RESULT



■ FIRST CLASS WITH ■ FIRST CLASS ■ HIGHER SECOND CLASS ■ SECOND CLASS ■ PASS ■ FAIL

J. Johnson

Dr. Jiji Johnson

College Examination Officer

College Examination Officer

Christ College

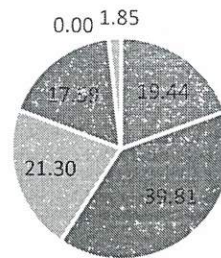
Pune- 411 014.

Principal / Director
Carmel Vidya Bhavan Trust's
Christ College
Pune- 411014

**CHRIST COLLEGE -
PUNE**
T.Y. B.COM. RESULT ANALYSIS
2018-2019
ANNUAL RESULT

FIRST CLASS WITH DISTINCTION [70% & above]	FIRST CLASS [60% & above]	HIGHER SECOND CLASS [55% & above]	SECOND CLASS [50% & above]	PASS [40% & above]	FAIL [Below 40%]	TOTAL
21	43	23	19	0	2	108
19.44%	39.81%	21.30%	17.59%	0.00%	1.85%	100.00%

T.Y.B.COM. RESULT



FIRST CLASS WITH DISTINCTION
 FIRST CLASS
 HIGHER SECOND CLASS
 SECOND CLASS
 PASS
 FAIL

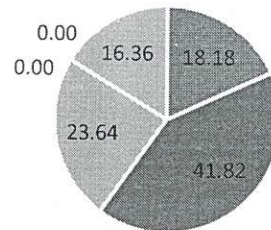
J. Johnson
Dr. Jiji Johnson
 College Examination Officer
 College Examination Officer
 Christ College
 Pune- 411 014.


Principal / Director
Carmel Vidya Bhavan Trust's
Christ College
Pune- 411014


**CHRIST COLLEGE -
PUNE**
T. Y. B.B.A. RESULT ANALYSIS
2018-2019
ANNUAL RESULT


FIRST CLASS WITH DISTINCTION [70% & above]	FIRST CLASS [60% & above]	HIGHER SECOND CLASS [55% & above]	SECOND CLASS [50% & above]	PASS [40% & above]	FAIL [Below 40%]	TOTAL
10	23	13	0	0	9	55
18.18	41.82	23.64	0.00	0.00	16.36	100.00

T.Y.B.B.A. RESULT



FIRST CLASS WITH DISTINCTION
 FIRST CLASS
 HIGHER SECOND CLASS
 SECOND CLASS
 PASS
 FAIL

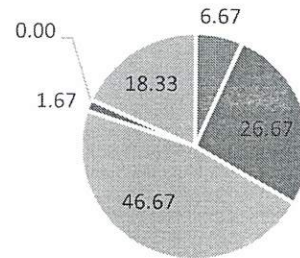

Dr. Jiji Johnson
 College Examination Officer
 College Examination Officer
 Christ College
 Pune- 411 014.


Principal / Director
Carmel Vidya Bhavan Trust's
Christ College
Pune- 411014

**CHRIST COLLEGE -
PUNE**
T.Y. B.B.A.(I.B.) RESULT ANALYSIS
2018-2019
ANNUAL RESULT

FIRST CLASS WITH DISTINCTION [70% & above]	FIRST CLASS [60% & above]	HIGHER SECOND CLASS [55% & above]	SECOND CLASS [50% & above]	PASS [40% & above]	FAIL [Below 40%]	TOTAL
4	16	28	1	0	11	60
6.67	26.67	46.67	1.67	0.00	18.33	100.00

T.Y.B.B.A.(I.B.) RESULT



■ FIRST CLASS WITH DISTINCTION ■ FIRST CLASS ■ HIGHER SECOND CLASS ■ SECOND CLASS ■ PASS ■ FAIL

J. Johnson
Dr. Jiji Johnson
College Examination Officer
College Examination Officer
Christ College
Pune- 411 014.

[Signature]
Principal / Director
Carmel Vidya Bhavan Trust's
Christ College
Pune- 411014

CHRIST COLLEGE - PUNE

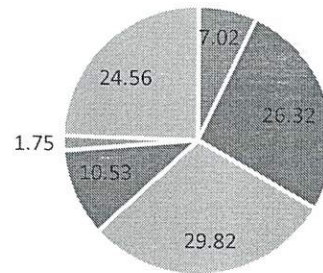
T.Y. B.B.A.(C.A.) RESULT ANALYSIS

2018-2019

ANNUAL RESULT

FIRST CLASS WITH DISTINCTION [70% & above]	FIRST CLASS [60% & above]	HIGHER SECOND CLASS [55% & above]	SECOND CLASS [50% & above]	PASS [40% & above]	FAIL [Below 40%]	TOTAL
4	15	17	6	1	14	57
7.02	26.32	29.82	10.53	1.75	24.56	100.00

T.Y.B.B.A.(C.A.) RESULT



■ FIRST CLASS WITH DISTINCTION
■ FIRST CLASS
■ HIGHER SECOND CLASS
■ SECOND CLASS
■ PASS
■ FAIL

J. Johnson

Dr. Jiji Johnson
College Examination Officer
College Examination Officer
Christ College
Pune- 411 014.

Principal / Director
Carmel Vidya Bhavan Trust's
Christ College
Pune- 411014

CHRIST COLLEGE - PUNE

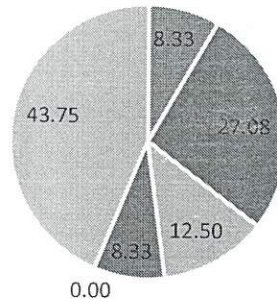
T.Y. B.Sc.(C.S.) RESULT ANALYSIS

2018-2019

ANNUAL RESULT

FIRST CLASS WITH DISTINCTION [70% & above]	FIRST CLASS [60% & above]	HIGHER SECOND CLASS [55% & above]	SECOND CLASS [50% & above]	PASS [40% & above]	FAIL [Below 40%]	TOTAL
4	13	6	4	0	21	48
8.33	27.08	12.50	8.33	0.00	43.75	100.00

T.Y.B.Sc.(CS) RESULT



FIRST CLASS WITH DISTINCTION
 FIRST CLASS
 HIGHER SECOND CLASS
 SECOND CLASS
 PASS
 FAIL

J. Johnson

Dr. Jiji Johnson
College Examination Officer

College Examination Officer
Christ College
Pune- 411 014.

Principal / Director
Carmel Vidya Bhavan Trust's
Christ College
Pune- 411014

CHRIST COLLEGE - PUNE

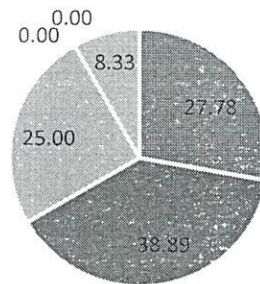
S.Y.M.Com. RESULT ANALYSIS

2018-2019

ANNUAL RESULT


FIRST CLASS WITH DISTINCTION [70% & above]	FIRST CLASS [60% & above]	HIGHER SECOND CLASS [55% & above]	SECOND CLASS [50% & above]	PASS [40% & above]	FAIL [Below 40%]	TOTAL
10	14	9	0	0	3	36
27.78	38.89	25.00	0.00	0.00	8.33	100.00

S.Y.MCOM. RESULT



FIRST CLASS WITH DISTINCTION
 FIRST CLASS
 HIGHER SECOND CLASS
 SECOND CLASS
 PASS
 FAIL


Dr. Jiji Johnson
 College Examination Officer
 Christ College
 Pune- 411 014.


Principal / Director
 Carmel Vidya Bhavan Trust's
 Christ College
 Pune- 411014

CHRIST COLLEGE - PUNE

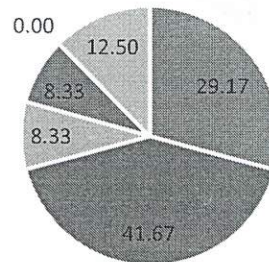
S.Y.M.Sc.(CS) RESULT ANALYSIS

2018-2019

ANNUAL RESULT

FIRST CLASS WITH DISTINCTION [70% & above]	FIRST CLASS [60% & above]	HIGHER SECOND CLASS [55% & above]	SECOND CLASS [50% & above]	PASS [40% & above]	FAIL [Below 40%]	TOTAL
7	10	2	2	0	3	24
29.17	41.67	8.33	8.33	0.00	12.50	100.00

S.Y. M.Sc. RESULT



FIRST CLASS WITH DISTINCTION
 FIRST CLASS
 HIGHER SECOND CLASS
 SECOND CLASS
 PASS
 FAIL

J. Johnson

Dr. Jiji Johnson
College Examination Officer
College Examination Officer
Christ College
Pune- 411 014.

[Signature]
Principal / Director
Carmel Vidya Bhavan Trust's
Christ College
Pune- 411014